



 McWane Science Center

# you build it

ON PAGE 4

SPONSORED BY  
**Protective** 





## Letter from the President

So much is happening at McWane this fall, and we are excited to share it all with you! Our visitors have raved about our You Build It exhibit, featuring Lego blocks, Keva planks, and an array of Rigamajig gadgets. I have especially loved watching families work together to design and build some magnificent things, getting lost in the creative process while spending quality time with each other. One of the great things about this exhibit is no matter how many times you visit there are countless new challenges and new ways to stretch your imagination.

October brings lots of fun with Spooky Science activities throughout the Adventure Halls, a Family Night @ McWane featuring a Harry Potter movie and activities, and a block party celebrating STEM and hip hop!

November is always a favorite time at McWane because it marks the return of the trains! You will enjoy revisiting your favorite layouts, but there are also lots of new things to see along the tracks. We are grateful to The Wrecking Crew, our model train partner, for the work they put in all year long to make the exhibit special to visitors of all ages. This year we are enhancing the exhibit with a new IMAX movie called Train Time, that explores the magic of freight trains and their importance in the culture and economy of our country. Don't miss this entertaining and informative movie when you come to see the trains!

November also marks our nation's annual celebration of the veterans who have given so much to protect our lives and liberty. McWane is a great place to spend the day and is a wonderful vantage point to watch the City's annual parade. This year we are featuring the IMAX Documentary, D-Day, during the two weeks surrounding that holiday. The film tells the inspiring story of one of the greatest battles of World War II.

I look forward to seeing you this fall at McWane.

Amy Templeton  
President and CEO

# Contents



## COMING SOON TO IMAX

Check out all the amazing movies we have in store for you to enjoy



## YOU BUILD IT IS OPEN!

We built it; now it's your turn!



## ENJOY MCWANE ALL YEAR

Learn about all the perks to becoming a member



## THANK YOU, VOLUNTEERS

Join us as we say our fond farewells to our Summer Teen Volunteers



## HOLIDAY HAPPENINGS

It is almost time to welcome back McWane holiday traditions



## MIC DROP

Mark your calendars for an upcoming hip-hop event

## 2023 BOARD OF TRUSTEES

Stephen Owens, Chairman • Nick Willis, Past Chairman  
Zac Riddle, Treasurer

Pronce Acker, Galvin Billups, Harrison Bishop, Maggie Bolln,  
William W. Brooke, Henna Budhwani, Milton Davis,  
Arthur Fisher, Jr., Courtney French, David Germany, John Harbert,  
David Killion, Amanda Loper, Farah Lubin, Katie Bee Marshall,  
Barbara Martin, Kate Mather, Lee Meadows, Jeanne Monk,  
Lenus Perkins, Matt Pierce, Travis Pritchett, Carolyn Ratliff,  
Jim Screws, Adrienne Starks

## PRESIDENT/CEO

Amy W. Templeton

## 2023 ENDOWMENT BOARD

William W. Brooke, President

Nina Botsford, Frank Caley, Sheri Cook, William Dow, Norman Jetmundsen,  
Charlie Miller, Charles Powell, Travis Pritchett, Ashley Robinett,  
Bowen Thagard, Forest W. Whatley, Jr., TJ Willings, Nicholas Willis

*McWane Science Center is a 501(C)(3) nonprofit organization.  
Our mission is to spark wonder and curiosity about our world through  
hands-on science experiences*

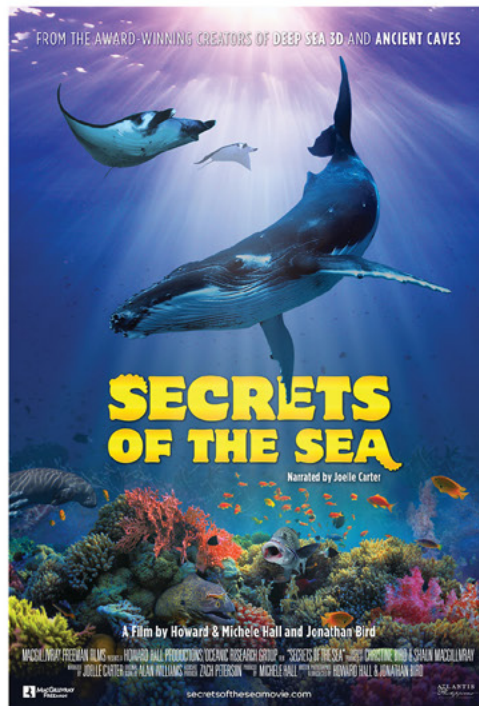


IMAX SEASON PRESENTED BY



## Arctic: Our Frozen Planet

At the top of our planet lies a magical realm of snow and ice – the Arctic. Every year it is transformed by an annual cycle of freeze and thaw. For millennia, this steady seasonal beat has allowed life to thrive. But our planet is warming, upsetting this natural balance and the Arctic is changing faster than anywhere else on Earth. Scientists are now discovering that what happens here, affects us all. We will all be impacted by a warming Arctic but none more so than local communities. Working with scientists, together they are shedding light on how changes to the Arctic's natural balance affects each and every one of us, and they haven't given up hope. Now it is up to us all to combat global warming and ensure there is a future for this fragile wilderness.



## Secrets of the Sea

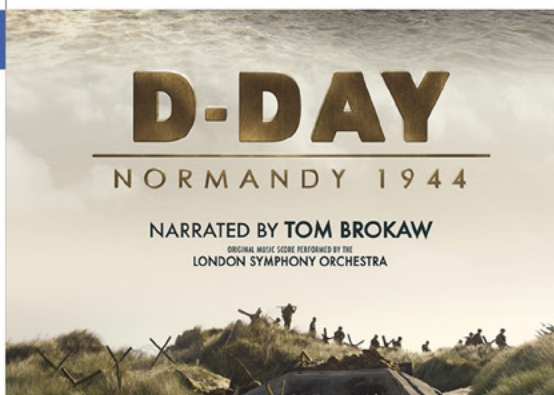
Prepare to meet some of the ocean's strangest and most spectacular creatures in the new film *Secrets of the Sea*, narrated by Joelle Carter. From adorable pygmy seahorses and opalescent squid, to manta rays, tiger sharks, a coconut octopus, and much more, *Secrets of the Sea* takes you face-to-face with an astonishing array of marine critters, showing the fascinating ways they interact with each other and their environment. Filmed in the Philippines, Mexico, Tahiti, Indonesia, Palau, Hawaii, California and other locations, and featuring more than 70 different marine species, *Secrets of the Sea* reveals the many wonders and mysteries of our ocean world and demonstrates the critical importance of marine biodiversity to keeping our oceans healthy.

## UPCOMING DOCUMENTARY

### D-Day: Normandy 1944

Oct 27 - Nov 17

June 6, 1944: The largest Allied operation of World War II began in Normandy, France. Yet, few know in detail exactly why and how, from the end of 1943 through August 1944, this region became the most important location in the world. Blending multiple cinematographic techniques, *D-Day: Normandy 1944* brings this monumental event to the McWane's IMAX Dome Theater. Audiences of all ages will discover from a new perspective how this landing changed the world. Exploring history, military strategy, science, technology and human values, the film will educate and appeal to all. Narrated by Tom Brokaw, *D-Day: Normandy 1944* pays tribute to those who gave their lives for our liberty...a duty of memory, a duty of gratitude.



HAUNTING VENICE  
A HAUNTING IN VENICE  
SEPT 15



BARBIE: THE MOVIE  
SEPT 22



THE CREATOR  
SEPT 29



TRAIN TIME  
NOV 17



# PLAN AHEAD

McWane Science Center special days in 2023 are presented by



## Read A Book Month Entire month of Sept

From thrilling space odysseys to mind-bending scientific breakthroughs, embark on a literary voyage during Read a Book Month. Each program will feature curated book recommendations designed to spark wonder and curiosity in readers of all ages. Begin the journey through a galaxy of stories that will fuel your imagination and ignite your passion for discovery.

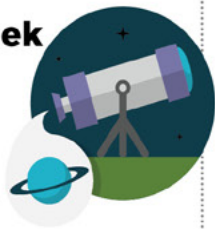
## Hispanic Heritage Month

Every weekend from Sept 15 - Oct 15

Celebrate Hispanic Heritage Month each weekend as we pay tribute to the contributions of Hispanic scientists who have shaped our understanding of the world. From aerospace engineers to particle physicists to a chemist who saved our planet, our programs will showcase the achievements of incredible scientists and their connections to the captivating concepts we explore.

## Astronomy Week Sept 20 - 24

Prepare to be star-struck as we embark on a cosmic journey during Astronomy Week. Imagine what life might look like on other worlds, create your own colorful nebula, and get ready to blast off with a week filled with stellar activities and a galaxy's worth of fun.



## Sci-Cafe: Eclipses Sept 26

Join us at Oak Mountain State Park at 6 PM to find out everything you need to know about the upcoming eclipse in October. Find out more on page 7.



## Earth Science Week Oct 11 - 15

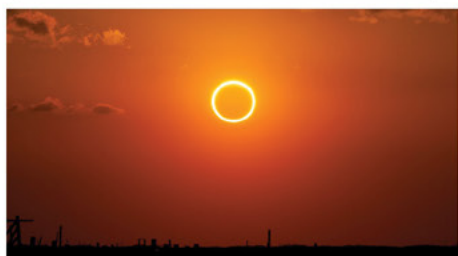
Get ready to rock and roll with Mother Nature! It's Earth Science Week where we'll dig deep into the secrets of our planet, unleash the power of volcanoes (metaphorically), and even teach tectonic plates to dance—earth-shaking fun guaranteed!



## Family Nights @ McWane: Back to Hogwarts

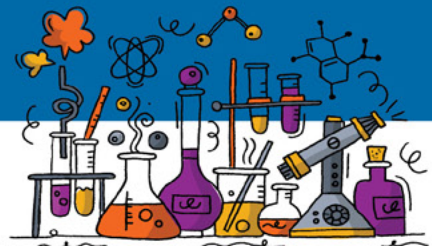
Oct 13

You're invited to McWane Science Center's first Family Nights @ McWane! Come celebrate all things Harry Potter with us this Friday evening. Learn more on the next page.



## Sun Day on a Saturday Oct 14

Mark your calendars for a celestial spectacle as an annular eclipse graces our skies. Join us for an illuminating day of solar exploration as we discover science behind this awe-inspiring event.



## National Chemistry Week Oct 18 - 22

Discover the healing power of chemistry during this year's National Chemistry Week. Investigate chemistry's role in creating life-saving medicines and cutting-edge vaccines as well as unraveling the mysteries of our own body's mechanisms.



## Dropping Science: The Block Party

Oct 21

Join us for a McWane Block Party to Celebrate the Partnership of STEM Education and Hip Hop! Learn more on the back cover of this issue.

## Spooky Science Oct 27 - 29

Enter a world where potions bubble, creepies crawl, and monsters come to life. Join McWane's spooky scientists for a wickedly fun day of eerie experiments that will leave you howling with delight.



## NATIONAL NATIVE AMERICAN HERITAGE MONTH

## Native American Heritage Month

Every weekend in Nov

Celebrate Native American Month each weekend as we pay tribute to the contributions of Indigenous scientists who have shaped our understanding of the world. From computer scientists creating culturally relevant AI to James Beard Award-winning chefs, our programs will showcase the achievements of incredible scientists and their connections to the captivating concepts we explore.





**Arrakis Adventures:  
Science of *Dune***

**Nov 4**

Navigate the sands of science to uncover the secrets of Arrakis. Inspired by *Dune*, we'll dive into the fascinating science and technology depicted in the movie. Whether you're a die-hard *Dune* fan or just curious about the science behind the saga, this day promises to be as unforgettable as riding a sandworm.

**Harvest Fest**

**Nov 25**

Experience the magic of fall in this bountiful celebration.

From exploring the science behind

changing leaves to indulging your taste buds in the art of culinary chemistry. This event promises a cornucopia of learning and flavor.

**COOL STUFF STORE**

**THE COOLEST GIFTS IN TOWN**

McWane Science Center

**Family Nights @ McWane**

**Back to Hogwarts!**

**October 13 | 6:00 - 9:30 PM**

Join us at the McWane Science Center for an enchanting family fun night! Immerse yourself in a magical experience tailored to delight every Harry Potter enthusiast.

Embrace the wizarding spirit by donning the attire of your favorite character and engaging in a plethora of Harry Potter-themed activities and captivating science demonstrations across the museum. As an exciting add-on, seize the opportunity to relive the magic with two exclusive screenings of *Harry Potter and the Sorcerer's Stone* in the immersive IMAX Dome Theater.

**Price: \$25 per person for event  
+10 per person for movie add-on**



# you build it

SPONSORED BY

Protective 



*You Build It!* McWane Science Center's newest exhibit experience is a 5,000 square foot imagination and creation space on the 3rd floor of the museum. This immersive exhibit experience is designed to spark imagination, creativity, innovation, collaboration, and problem-solving. Be sure to visit it before it leaves Oct 30th!

## The goals for *You Build It!* are to:

- Help visitors develop the emotional, physical, and intellectual skills needed to confidently create
- Inspire visitors to design their own inventions
- Motivate visitors to learn and play together, building on diversity, collaborative thinking, and teamwork

*You Build It!* is presented by Protective Life Foundation and supported by our friends at Craneworks/Rentalworks and the Thompson Foundation.

*You Build It!* is fun and engaging for not only kids but their adults too! No matter what age you are, you can enjoy flexing your creativity muscle at the different building stations!



## LEGO BRICKS

Using this classic and highly popular construction toy, visitors will be able to build their own cities, vehicles, and artwork with challenges throughout to help guide the experience when appropriate. This area includes a ramp, Lego graffiti wall, and several challenge stations.



## RIGAMAJIGS

This area includes a series of workshop stations with large-scale, loose-part, building materials where visitors can design a house to withstand a hurricane, build their own airplane, create their own pulley system to meet a design challenge, and explore their own inventions. One's imagination is the only limitation.



## KEVA PLANKS

In the KEVA Plank gallery anything is possible. Visitors can build anything they can imagine from their own roller coaster, a McWane famous art piece, bridges, ball runs, tallest towers, castles, forts, and so much more. There is also a gallery of some of the most innovative inventions created to date.





# MEMBERSHIP:

## *Your key to year-round* science, learning, & fun!



No matter the season, there is no better place to excite and inspire the mind, than at McWane Science Center, and with a museum membership, you have unlimited access to engaging exhibits, inspiring science shows, hands-on learning opportunities, member-only events, and memories that will last a lifetime. Get your membership this Fall and take advantage of these great benefits:

- Unlimited visits to a climate-controlled space for science, learning, and fun. Avoid the elements with non-stop fun inside McWane Science Center. Record-high temperatures outside? Come to McWane! Torrential downpour? Come to McWane! Frigidly cold outside? Come to McWane! The weather is always perfect and the excitement level is always high inside of McWane's Adventure Halls.
- Exclusive access to the museum during Members Only Nights. Once a month, the museum has extended hours so that our members can enjoy minimal crowds and a fun night reserved just for you!
- Free-parking in our attached parking deck—while visiting the museum and dependent on availability.
- Free or reduced admission to over 350 other science museums world-wide.
- Discounts on movies, camps, birthday parties, and Cool Stuff Store purchases.

So what are you waiting for? McWane Science Center's Build-A-Membership program is waiting for YOU to create a membership that suits your family. Hurry and take advantage of McWane ALL YEAR LONG. We can't wait to see you!

“Our family really enjoys coming to the Members Only Nights. Not only is it a chance to enjoy the exhibits with a much smaller crowd, but it also allows us to get to know the wonderful staff better. Everyone is kind and knowledgeable and makes learning fun!”

-Jill Armstrong,  
member since 2019

### Check Out the Cool Members Only Night Themes Coming Up This Fall:

- 9/24 | Sports Science -  
No Blood, No Sweat, And No Tears Here!  
Wear your favorite team jersey/shirt and learn more about the science behind your favorite sports!
- 10/29 | Science of the Weird  
Wear your Halloween costume and join us for a Weird Science Scavenger Hunt!



## Fall Fun Activity: Nature Color Scavenger Hunt

Is anyone else's favorite color Autumn? As the temperature cools and the leaves change, it's the perfect time to get outside in nature. As you explore the colors of the season with your little one, challenge them with a vibrant scavenger hunt that exercises identification and matching skills.

ittybitty  
MAGIC CITY  
CORNER

### Materials

- Key ring
- Hole punch
- Paint chips (free at any hardware store)

### Assembly:

- 1 Punch a hole at the top of each paint chip and fix them onto a keyring.
- 2 Optional: cut a small window into the center of each paint chip for easy matching
- 3 Explore! Find objects outside (or inside) that match the colors and shades of your paint chips.



Join us at Itty Bitty Magic City this Fall as we explore the many wonders of our world through weekly program offerings! See our website for program times and locations.



## Eclipse Extravaganza:

### Unveiling the Cosmic Dance of Sun and Moon!

Gene Byrd, Professor Emeritus of Astronomy at the University of Alabama, will be presenting a program on Eclipses. Whether solar or lunar, he'll explain how they work, when they happen, how to safely view them, and everything you'll need to know for the October 14<sup>th</sup> annular eclipse. Following this talk, we will head outside for some telescope viewing of the night sky (weather permitting).

**Date:** Tuesday, Sept 26

**When:** 6 PM (Trivia starts at 6:15)

**Where:** Oak Mountain State Park Interpretive Center

**Cost:** The program is free but Oak Mountain has a Gate fee of \$5 for most adults (for discounts on children, seniors, military, and more, check out [alapark.com](http://alapark.com) for Oak Mountain's Entrance Fees)







# Shining Stars of Summer:

## Celebrating the 2023 Teen Volunteers at McWane

Since summer at McWane is wrapping up, we'd like to recognize the 2023 Summer Teen Volunteers who spent their summer helping us spark wonder and curiosity about our world through hands on science experiences!

We had 140 incredible Teen and Junior Teen volunteers serve 11,000 hours with us over the summer! Their incredible contribution will have a lasting impact on every camper that joined us at Camp McWane and every visitor that walked through our Adventure Halls.

Luckily, we still get the chance to see our amazing teens throughout the school year on weekends and school holidays. You'll also see us welcome more Teen Volunteers as we kick off our School Year Teen Program in September!

Applications for the School Year Teen Program will open from August-November and can be found at [mcwane.org/volunteer](http://mcwane.org/volunteer)

### BY THE NUMBERS



**11,000 Volunteer Hours**



**140 Teen Volunteers**







# McWane Welcomes Back *The Magic of*

# *Model Trains*

Get ready to be captivated by the mesmerizing allure of model trains as McWane Science Center proudly announces the return of its cherished holiday tradition for the 2023 festive season. Immerse yourself in a captivating spectacle of locomotive artistry, where trains of all shapes and sizes come to life within intricate landscapes that leave no detail unnoticed.

Step into the shoes of a conductor and engage with the delightful 'I Spy' addition within the Magic of Model Train exhibit – a playful challenge for the keen-eyed. If that's not enough thrill, soar through the air on the exhilarating McWane Zipline. Or take a leisurely ride on the McWane Train! Yes, you heard it right! Responding to overwhelming demand, the McWane Zipline and McWane Train are back again at the Magic of Model Trains exhibition for the 2023 season.

Mark your calendars as the Magic of Model Trains exhibition unveils its wonder on Saturday, November 18th. Brace yourself for hours of enchantment and exploration that will engage minds both young and old. And the best part? Admission to this captivating exhibit is included with the regular entry fee, inviting you to dive into the holiday spirit at McWane Science Center.

So, gather your excitement and join us in celebrating this cherished holiday tradition amidst the captivating world of model trains. Your holiday season is about to get a whole lot more magical at McWane!





OCT  
21

# DROPPING SCIENCE

The Block Party

included with  
museum  
admission  
**ticket**



Join McWane Science Center and our Hip Hop friends and experts to explore the impact of science, technology, engineering, and math (STEM) on the creation of Hip Hop and how Hip Hop is an incredible tool for STEM education and inspiration. This experience will also help you discover how to use the various elements of Hip Hop as a creative and impactful expression of your individual voice. The event will include local Hip Hop acts, STEM and Hip Hop educational experiences, and a day's worth of Hip Hop science, learning, and fun on our plaza and in our museum.

**LIVE MUSIC • GRAFFITI • SCIENCE DEMOS • FOOD TRUCKS • BREAK DANCING**

